

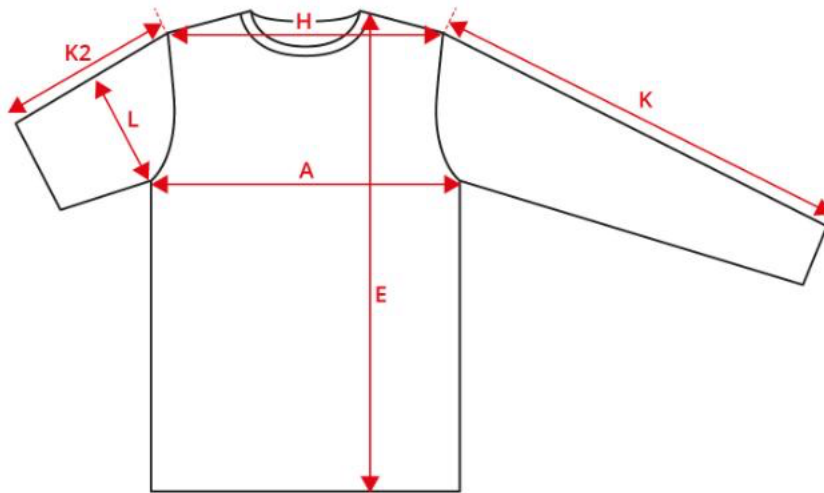
NO.  
0523

# Contrast polo shirt | stretch | women



Description (measured in cm)	S	M	L	XL	2XL	3XL	4XL
A: ½ Chest width	44	48	52	56	60	64	68
E: Front length from high point shoulder	63	65	67	69	71	73	75
H: Shoulder to shoulder	37	40	44	48	52	56	59
K2: Sleeve length - short	16	17	18	19	20	21	22
L: ½ upper arm width	18.5	19.5	20.5	21.5	22.5	23.5	24.5

## How to measure



## Tolerance +/- in cm

A	E	H	K	K2	L
1.5	1.5	1.5	1.5	1	1

The measurements in a product measurement chart refer to measurements made directly on the clothing. Lay the garment out flat on an even surface without stretching it. Take the measurements as shown by the arrows and select the size that fits. Use a tape measure for the best results. The tolerances in the measurement chart are based on when the item is received from ID® and not